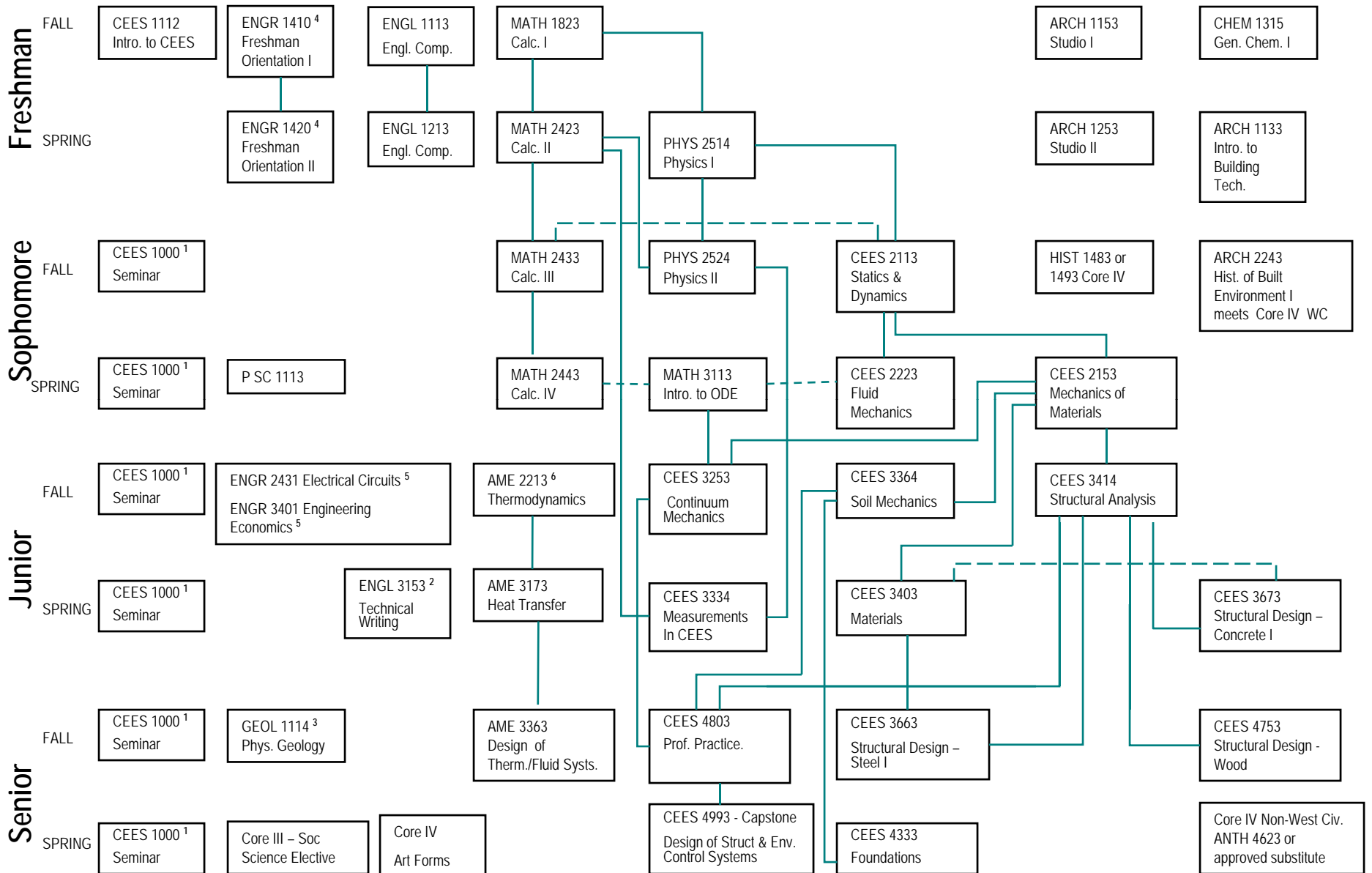


Architectural Engineering Curriculum



— Pre-requisite must be taken first. - - - Co-requisite must be taken as a pre-requisite or in the same semester.

- 1) CEES1000 – must take 4 of 6 offered
- 2) ENGL 3153 must be taken with CEES 3364 or CEES 3403 pre-req = ENGL 1213
- 3) GEOL 1114 Physical Geology or other four-hour match or basic science elective
- 4) Transfer students are required to take ENGR 3410 instead of ENGR 1410 & ENGR 1420
- 5) ENGR 2431, 2461 and 3401 pre-reqs = MATH 2423 and MATH 2433 and MATH 1823 and Physics 2524
- 6) AME 2213 pre-reqs = MATH 2433 and Physics 2524